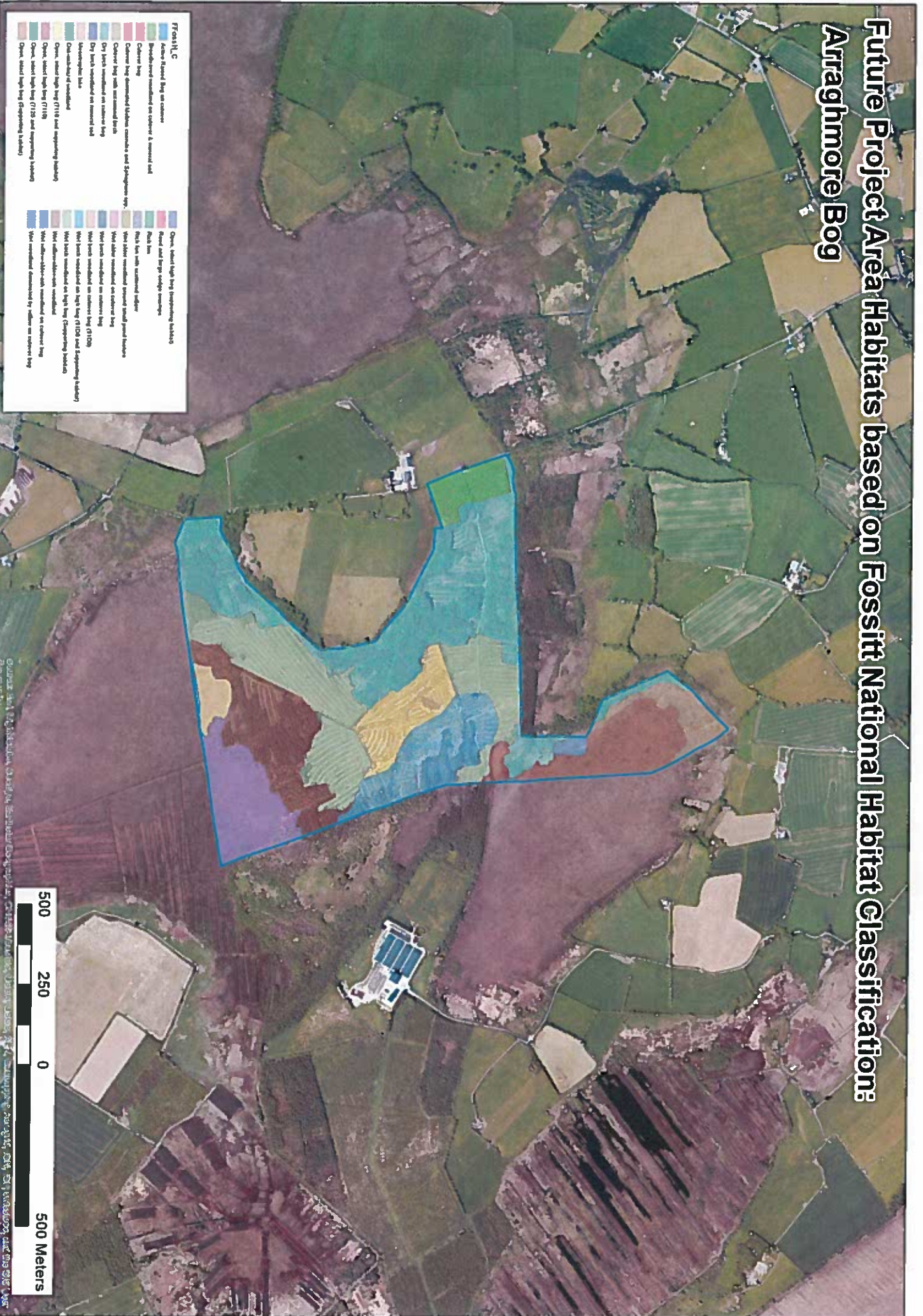


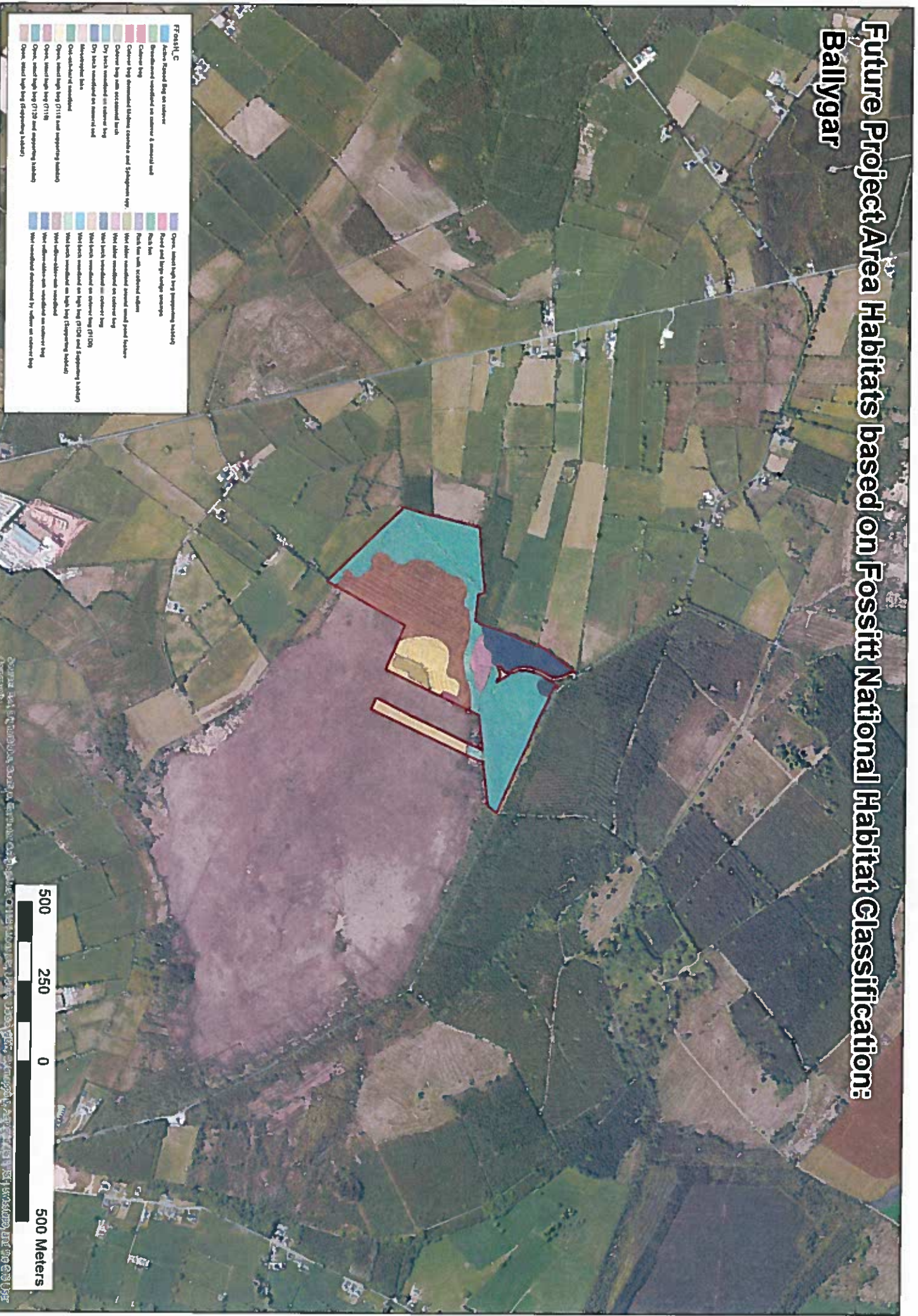
Future Project Area Habitats based on Fossitt National Habitat Classification: Arraghmore Bog



- Fossitt, C**
- Active Raised Bog on coarse
 - Abandoned woodland on coarse & mixed soil
 - Cherry Bog
 - Cherry Bog dominated by *Salix repens* and *Sphagnum* spp.
 - Cherry Bog with scattered birch
 - Dry heath woodland on coarse bog
 - Dry heath woodland on mixed soil
 - Heathscrub bog
 - Open, mixed bog (T118) and surrounding habitats
 - Open, mixed bog (T119)
 - Open, mixed bog (T120) and surrounding habitats
 - Open, mixed bog (T121) and surrounding habitats
 - Open, mixed bog (T122) and surrounding habitats
 - Open, mixed bog (T123) and surrounding habitats
 - Open, mixed bog (T124) and surrounding habitats
 - Open, mixed bog (T125) and surrounding habitats
 - Open, mixed bog (T126) and surrounding habitats
 - Open, mixed bog (T127) and surrounding habitats
 - Open, mixed bog (T128) and surrounding habitats
 - Open, mixed bog (T129) and surrounding habitats
 - Open, mixed bog (T130) and surrounding habitats
 - Open, mixed bog (T131) and surrounding habitats
 - Open, mixed bog (T132) and surrounding habitats
 - Open, mixed bog (T133) and surrounding habitats
 - Open, mixed bog (T134) and surrounding habitats
 - Open, mixed bog (T135) and surrounding habitats
 - Open, mixed bog (T136) and surrounding habitats
 - Open, mixed bog (T137) and surrounding habitats
 - Open, mixed bog (T138) and surrounding habitats
 - Open, mixed bog (T139) and surrounding habitats
 - Open, mixed bog (T140) and surrounding habitats
 - Open, mixed bog (T141) and surrounding habitats
 - Open, mixed bog (T142) and surrounding habitats
 - Open, mixed bog (T143) and surrounding habitats
 - Open, mixed bog (T144) and surrounding habitats
 - Open, mixed bog (T145) and surrounding habitats
 - Open, mixed bog (T146) and surrounding habitats
 - Open, mixed bog (T147) and surrounding habitats
 - Open, mixed bog (T148) and surrounding habitats
 - Open, mixed bog (T149) and surrounding habitats
 - Open, mixed bog (T150) and surrounding habitats
 - Open, mixed bog (T151) and surrounding habitats
 - Open, mixed bog (T152) and surrounding habitats
 - Open, mixed bog (T153) and surrounding habitats
 - Open, mixed bog (T154) and surrounding habitats
 - Open, mixed bog (T155) and surrounding habitats
 - Open, mixed bog (T156) and surrounding habitats
 - Open, mixed bog (T157) and surrounding habitats
 - Open, mixed bog (T158) and surrounding habitats
 - Open, mixed bog (T159) and surrounding habitats
 - Open, mixed bog (T160) and surrounding habitats
 - Open, mixed bog (T161) and surrounding habitats
 - Open, mixed bog (T162) and surrounding habitats
 - Open, mixed bog (T163) and surrounding habitats
 - Open, mixed bog (T164) and surrounding habitats
 - Open, mixed bog (T165) and surrounding habitats
 - Open, mixed bog (T166) and surrounding habitats
 - Open, mixed bog (T167) and surrounding habitats
 - Open, mixed bog (T168) and surrounding habitats
 - Open, mixed bog (T169) and surrounding habitats
 - Open, mixed bog (T170) and surrounding habitats
 - Open, mixed bog (T171) and surrounding habitats
 - Open, mixed bog (T172) and surrounding habitats
 - Open, mixed bog (T173) and surrounding habitats
 - Open, mixed bog (T174) and surrounding habitats
 - Open, mixed bog (T175) and surrounding habitats
 - Open, mixed bog (T176) and surrounding habitats
 - Open, mixed bog (T177) and surrounding habitats
 - Open, mixed bog (T178) and surrounding habitats
 - Open, mixed bog (T179) and surrounding habitats
 - Open, mixed bog (T180) and surrounding habitats
 - Open, mixed bog (T181) and surrounding habitats
 - Open, mixed bog (T182) and surrounding habitats
 - Open, mixed bog (T183) and surrounding habitats
 - Open, mixed bog (T184) and surrounding habitats
 - Open, mixed bog (T185) and surrounding habitats
 - Open, mixed bog (T186) and surrounding habitats
 - Open, mixed bog (T187) and surrounding habitats
 - Open, mixed bog (T188) and surrounding habitats
 - Open, mixed bog (T189) and surrounding habitats
 - Open, mixed bog (T190) and surrounding habitats
 - Open, mixed bog (T191) and surrounding habitats
 - Open, mixed bog (T192) and surrounding habitats
 - Open, mixed bog (T193) and surrounding habitats
 - Open, mixed bog (T194) and surrounding habitats
 - Open, mixed bog (T195) and surrounding habitats
 - Open, mixed bog (T196) and surrounding habitats
 - Open, mixed bog (T197) and surrounding habitats
 - Open, mixed bog (T198) and surrounding habitats
 - Open, mixed bog (T199) and surrounding habitats
 - Open, mixed bog (T200) and surrounding habitats



Future Project Area Habitats based on Fossitt National Habitat Classification: Ballygar

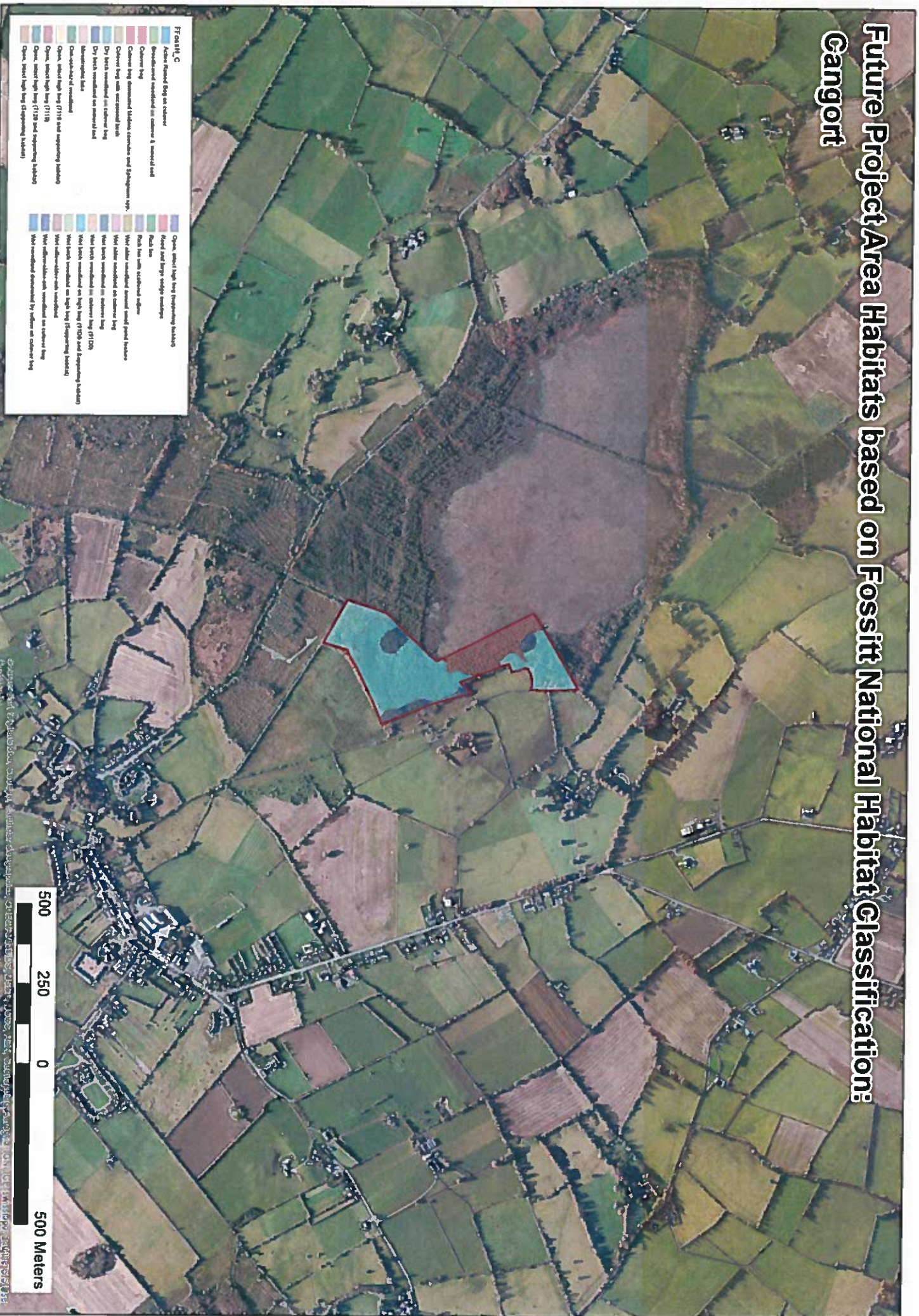


Fossitt, C

Active Raised Bog on complex	Open, sand high bog (F118 and supporting habitats)
Disturbed woodland on sandstone & gravel out	Open, sand high bog (F120 and supporting habitats)
Cladonia bog	Open, sand high bog (F122 and supporting habitats)
Cladonia bog dominated by <i>Cladonia</i> and <i>Sphagnum</i> spp.	Open, sand high bog (F124 and supporting habitats)
Cladonia bog with occasional <i>Cladonia</i>	Open, sand high bog (F126 and supporting habitats)
Dry heath woodland on raised bog	Open, sand high bog (F128 and supporting habitats)
Dry heath woodland on raised bog	Open, sand high bog (F130 and supporting habitats)
Heathland	Open, sand high bog (F132 and supporting habitats)
Open, sand high bog (F118 and supporting habitats)	Open, sand high bog (F134 and supporting habitats)
Open, sand high bog (F118)	Open, sand high bog (F136 and supporting habitats)
Open, sand high bog (F120 and supporting habitats)	Open, sand high bog (F138 and supporting habitats)
Open, sand high bog (F122 and supporting habitats)	Open, sand high bog (F140 and supporting habitats)
Open, sand high bog (F124 and supporting habitats)	Open, sand high bog (F142 and supporting habitats)
Open, sand high bog (F126 and supporting habitats)	Open, sand high bog (F144 and supporting habitats)
Open, sand high bog (F128 and supporting habitats)	Open, sand high bog (F146 and supporting habitats)
Open, sand high bog (F130 and supporting habitats)	Open, sand high bog (F148 and supporting habitats)
Open, sand high bog (F132 and supporting habitats)	Open, sand high bog (F150 and supporting habitats)
Open, sand high bog (F134 and supporting habitats)	Open, sand high bog (F152 and supporting habitats)
Open, sand high bog (F136 and supporting habitats)	Open, sand high bog (F154 and supporting habitats)
Open, sand high bog (F138 and supporting habitats)	Open, sand high bog (F156 and supporting habitats)
Open, sand high bog (F140 and supporting habitats)	Open, sand high bog (F158 and supporting habitats)
Open, sand high bog (F142 and supporting habitats)	Open, sand high bog (F160 and supporting habitats)
Open, sand high bog (F144 and supporting habitats)	Open, sand high bog (F162 and supporting habitats)
Open, sand high bog (F146 and supporting habitats)	Open, sand high bog (F164 and supporting habitats)
Open, sand high bog (F148 and supporting habitats)	Open, sand high bog (F166 and supporting habitats)
Open, sand high bog (F150 and supporting habitats)	Open, sand high bog (F168 and supporting habitats)
Open, sand high bog (F152 and supporting habitats)	Open, sand high bog (F170 and supporting habitats)
Open, sand high bog (F154 and supporting habitats)	Open, sand high bog (F172 and supporting habitats)
Open, sand high bog (F156 and supporting habitats)	Open, sand high bog (F174 and supporting habitats)
Open, sand high bog (F158 and supporting habitats)	Open, sand high bog (F176 and supporting habitats)
Open, sand high bog (F160 and supporting habitats)	Open, sand high bog (F178 and supporting habitats)
Open, sand high bog (F162 and supporting habitats)	Open, sand high bog (F180 and supporting habitats)
Open, sand high bog (F164 and supporting habitats)	Open, sand high bog (F182 and supporting habitats)
Open, sand high bog (F166 and supporting habitats)	Open, sand high bog (F184 and supporting habitats)
Open, sand high bog (F168 and supporting habitats)	Open, sand high bog (F186 and supporting habitats)
Open, sand high bog (F170 and supporting habitats)	Open, sand high bog (F188 and supporting habitats)
Open, sand high bog (F172 and supporting habitats)	Open, sand high bog (F190 and supporting habitats)
Open, sand high bog (F174 and supporting habitats)	Open, sand high bog (F192 and supporting habitats)
Open, sand high bog (F176 and supporting habitats)	Open, sand high bog (F194 and supporting habitats)
Open, sand high bog (F178 and supporting habitats)	Open, sand high bog (F196 and supporting habitats)
Open, sand high bog (F180 and supporting habitats)	Open, sand high bog (F198 and supporting habitats)
Open, sand high bog (F182 and supporting habitats)	Open, sand high bog (F200 and supporting habitats)

500 250 0 500 Meters

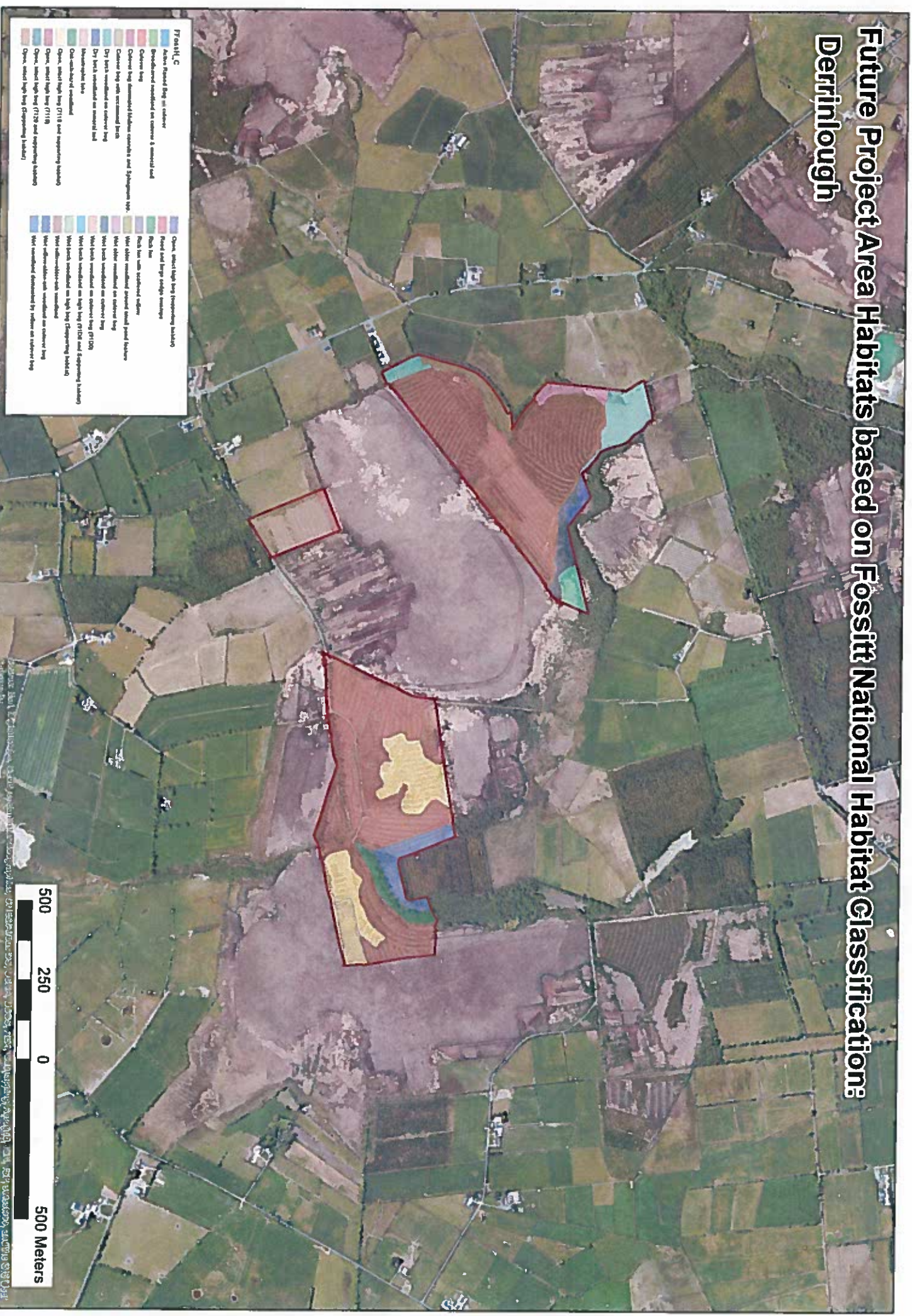
Future Project Area Habitats based on Fossitt National Habitat Classification Gangort



Fossitt C

Active Flood Bog on calcareous	Open, short high bog (Fossitt and Supporting habitats)
Developmental wetland in calcareous & mineral soil	Wet, short high bog (F11B)
Calcareous bog	Wet, short high bog (F11C)
Calcareous bog (developmental calcareous and Sphagnum spp.)	Wet, short high bog (F11D and Supporting habitats)
Calcareous bog with mineral-rich peat	Wet, short high bog (F11E and Supporting habitats)
Dry heath wetland on calcareous bog	Wet, short high bog (F11F)
Dry heath wetland on mineral soil	Wet, short high bog (F11G and Supporting habitats)
Developmental heath	Wet, short high bog (F11H)
Open, short high bog (F11A and Supporting habitats)	Wet, short high bog (F11I)
Open, short high bog (F11J)	Wet, short high bog (F11K)
Open, short high bog (F11L and Supporting habitats)	Wet, short high bog (F11M)
Open, short high bog (F11N)	Wet, short high bog (F11O)
Open, short high bog (F11P)	Wet, short high bog (F11Q)
Open, short high bog (F11R)	Wet, short high bog (F11S)
Open, short high bog (F11T)	Wet, short high bog (F11U)
Open, short high bog (F11V)	Wet, short high bog (F11W)
Open, short high bog (F11X)	Wet, short high bog (F11Y)
Open, short high bog (F11Z)	Wet, short high bog (F120)
Open, short high bog (F121)	Wet, short high bog (F122)
Open, short high bog (F123)	Wet, short high bog (F124)
Open, short high bog (F125)	Wet, short high bog (F126)
Open, short high bog (F127)	Wet, short high bog (F128)
Open, short high bog (F129)	Wet, short high bog (F12A)
Open, short high bog (F12B)	Wet, short high bog (F12C)
Open, short high bog (F12D)	Wet, short high bog (F12E)
Open, short high bog (F12F)	Wet, short high bog (F12G)
Open, short high bog (F12H)	Wet, short high bog (F12I)
Open, short high bog (F12J)	Wet, short high bog (F12K)
Open, short high bog (F12L)	Wet, short high bog (F12M)
Open, short high bog (F12N)	Wet, short high bog (F12O)
Open, short high bog (F12P)	Wet, short high bog (F12Q)
Open, short high bog (F12R)	Wet, short high bog (F12S)
Open, short high bog (F12T)	Wet, short high bog (F12U)
Open, short high bog (F12V)	Wet, short high bog (F12W)
Open, short high bog (F12X)	Wet, short high bog (F12Y)
Open, short high bog (F12Z)	Wet, short high bog (F120)
Open, short high bog (F121)	Wet, short high bog (F121)
Open, short high bog (F122)	Wet, short high bog (F122)
Open, short high bog (F123)	Wet, short high bog (F123)
Open, short high bog (F124)	Wet, short high bog (F124)
Open, short high bog (F125)	Wet, short high bog (F125)
Open, short high bog (F126)	Wet, short high bog (F126)
Open, short high bog (F127)	Wet, short high bog (F127)
Open, short high bog (F128)	Wet, short high bog (F128)
Open, short high bog (F129)	Wet, short high bog (F129)
Open, short high bog (F12A)	Wet, short high bog (F12A)
Open, short high bog (F12B)	Wet, short high bog (F12B)
Open, short high bog (F12C)	Wet, short high bog (F12C)
Open, short high bog (F12D)	Wet, short high bog (F12D)
Open, short high bog (F12E)	Wet, short high bog (F12E)
Open, short high bog (F12F)	Wet, short high bog (F12F)
Open, short high bog (F12G)	Wet, short high bog (F12G)
Open, short high bog (F12H)	Wet, short high bog (F12H)
Open, short high bog (F12I)	Wet, short high bog (F12I)
Open, short high bog (F12J)	Wet, short high bog (F12J)
Open, short high bog (F12K)	Wet, short high bog (F12K)
Open, short high bog (F12L)	Wet, short high bog (F12L)
Open, short high bog (F12M)	Wet, short high bog (F12M)
Open, short high bog (F12N)	Wet, short high bog (F12N)
Open, short high bog (F12O)	Wet, short high bog (F12O)
Open, short high bog (F12P)	Wet, short high bog (F12P)
Open, short high bog (F12Q)	Wet, short high bog (F12Q)
Open, short high bog (F12R)	Wet, short high bog (F12R)
Open, short high bog (F12S)	Wet, short high bog (F12S)
Open, short high bog (F12T)	Wet, short high bog (F12T)
Open, short high bog (F12U)	Wet, short high bog (F12U)
Open, short high bog (F12V)	Wet, short high bog (F12V)
Open, short high bog (F12W)	Wet, short high bog (F12W)
Open, short high bog (F12X)	Wet, short high bog (F12X)
Open, short high bog (F12Y)	Wet, short high bog (F12Y)
Open, short high bog (F12Z)	Wet, short high bog (F12Z)

Future Project Area Habitats based on Fossitt National Habitat Classification: Derrinlough



- Fossitt, C**
- Active Raised Bog in outdoor
 - Groundwater modified on coarse & mineral soil
 - Coarse bog
 - Coarse bog (semi)modified/modified coarse & subspungy silt
 - Coarse bog with increased silt
 - Dry heath (modified on outdoor bog)
 - Dry heath (modified on mineral soil)
 - Subspungy silt
 - Open, short high bog (F118) and surrounding habitats
 - Open, short high bog (F118)
 - Open, short high bog (F119) and surrounding habitats
 - Open, short high bog (F120) and surrounding habitats
 - Open, short high bog (F121) and surrounding habitats
 - Open, short high bog (F122) and surrounding habitats
 - Open, short high bog (F123) and surrounding habitats
 - Open, short high bog (F124) and surrounding habitats
 - Open, short high bog (F125) and surrounding habitats
 - Open, short high bog (F126) and surrounding habitats
 - Open, short high bog (F127) and surrounding habitats
 - Open, short high bog (F128) and surrounding habitats
 - Open, short high bog (F129) and surrounding habitats
 - Open, short high bog (F130) and surrounding habitats
 - Open, short high bog (F131) and surrounding habitats
 - Open, short high bog (F132) and surrounding habitats
 - Open, short high bog (F133) and surrounding habitats
 - Open, short high bog (F134) and surrounding habitats
 - Open, short high bog (F135) and surrounding habitats
 - Open, short high bog (F136) and surrounding habitats
 - Open, short high bog (F137) and surrounding habitats
 - Open, short high bog (F138) and surrounding habitats
 - Open, short high bog (F139) and surrounding habitats
 - Open, short high bog (F140) and surrounding habitats
 - Open, short high bog (F141) and surrounding habitats
 - Open, short high bog (F142) and surrounding habitats
 - Open, short high bog (F143) and surrounding habitats
 - Open, short high bog (F144) and surrounding habitats
 - Open, short high bog (F145) and surrounding habitats
 - Open, short high bog (F146) and surrounding habitats
 - Open, short high bog (F147) and surrounding habitats
 - Open, short high bog (F148) and surrounding habitats
 - Open, short high bog (F149) and surrounding habitats
 - Open, short high bog (F150) and surrounding habitats
 - Open, short high bog (F151) and surrounding habitats
 - Open, short high bog (F152) and surrounding habitats
 - Open, short high bog (F153) and surrounding habitats
 - Open, short high bog (F154) and surrounding habitats
 - Open, short high bog (F155) and surrounding habitats
 - Open, short high bog (F156) and surrounding habitats
 - Open, short high bog (F157) and surrounding habitats
 - Open, short high bog (F158) and surrounding habitats
 - Open, short high bog (F159) and surrounding habitats
 - Open, short high bog (F160) and surrounding habitats
 - Open, short high bog (F161) and surrounding habitats
 - Open, short high bog (F162) and surrounding habitats
 - Open, short high bog (F163) and surrounding habitats
 - Open, short high bog (F164) and surrounding habitats
 - Open, short high bog (F165) and surrounding habitats
 - Open, short high bog (F166) and surrounding habitats
 - Open, short high bog (F167) and surrounding habitats
 - Open, short high bog (F168) and surrounding habitats
 - Open, short high bog (F169) and surrounding habitats
 - Open, short high bog (F170) and surrounding habitats
 - Open, short high bog (F171) and surrounding habitats
 - Open, short high bog (F172) and surrounding habitats
 - Open, short high bog (F173) and surrounding habitats
 - Open, short high bog (F174) and surrounding habitats
 - Open, short high bog (F175) and surrounding habitats
 - Open, short high bog (F176) and surrounding habitats
 - Open, short high bog (F177) and surrounding habitats
 - Open, short high bog (F178) and surrounding habitats
 - Open, short high bog (F179) and surrounding habitats
 - Open, short high bog (F180) and surrounding habitats
 - Open, short high bog (F181) and surrounding habitats
 - Open, short high bog (F182) and surrounding habitats
 - Open, short high bog (F183) and surrounding habitats
 - Open, short high bog (F184) and surrounding habitats
 - Open, short high bog (F185) and surrounding habitats
 - Open, short high bog (F186) and surrounding habitats
 - Open, short high bog (F187) and surrounding habitats
 - Open, short high bog (F188) and surrounding habitats
 - Open, short high bog (F189) and surrounding habitats
 - Open, short high bog (F190) and surrounding habitats
 - Open, short high bog (F191) and surrounding habitats
 - Open, short high bog (F192) and surrounding habitats
 - Open, short high bog (F193) and surrounding habitats
 - Open, short high bog (F194) and surrounding habitats
 - Open, short high bog (F195) and surrounding habitats
 - Open, short high bog (F196) and surrounding habitats
 - Open, short high bog (F197) and surrounding habitats
 - Open, short high bog (F198) and surrounding habitats
 - Open, short high bog (F199) and surrounding habitats
 - Open, short high bog (F200) and surrounding habitats



Future Project Area Habitats based on Fossitt National Habitat Classification: Scohaboy Bog

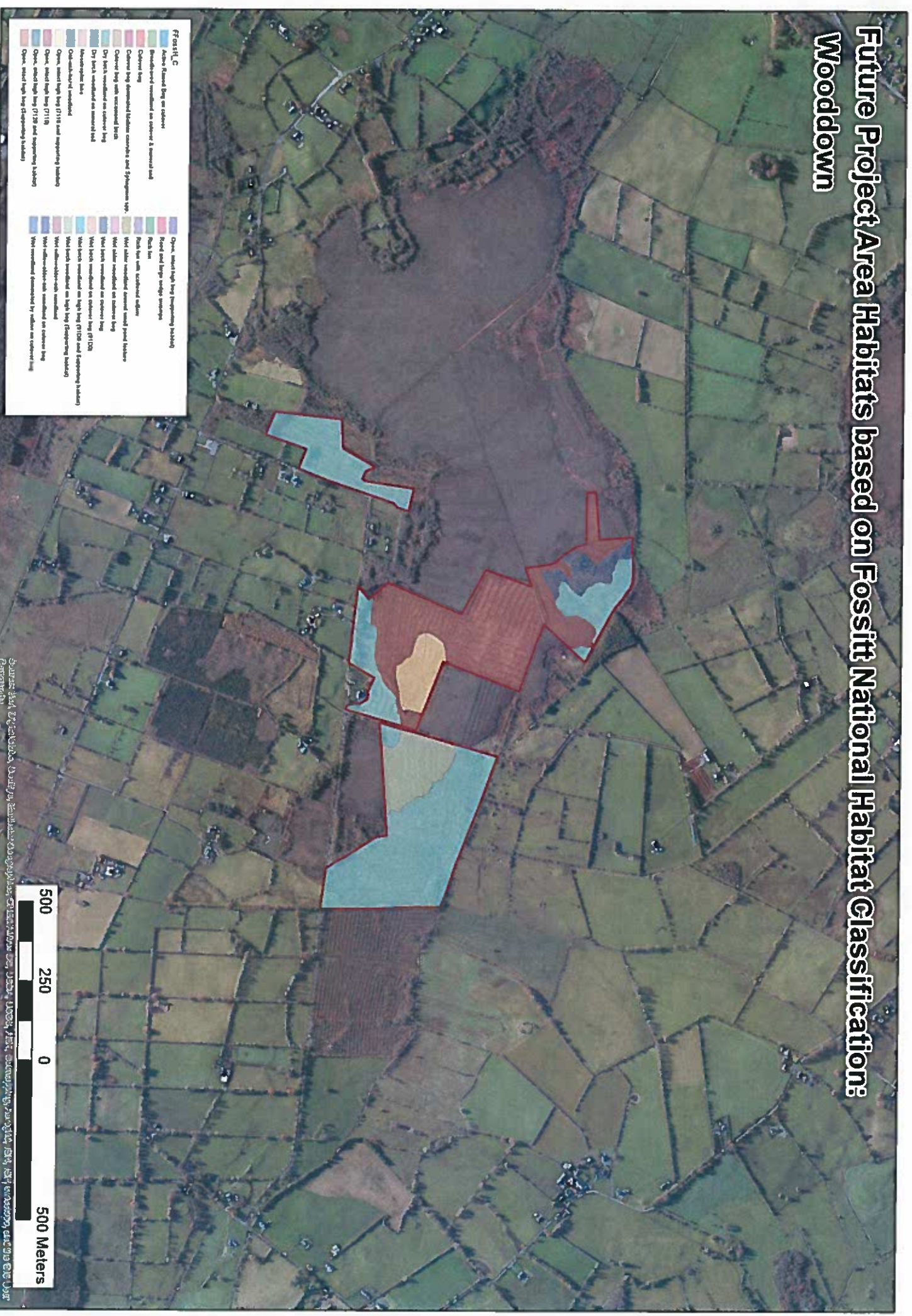


Fossitt C

Active Flashed Bog on outdoor	Open, short high bog (preexisting wetland)
Reverberated wetland on outdoor & natural land	Reed and large sedge swamps
Carex bog	Rich low with scattered sedges
Carex bog dominated by <i>Cladonia</i> and <i>Sphagnum</i> spp.	Wet sedge wetland around small pond features
Carex bog with scattered heath	Wet sedge wetland on outdoor bog
Dry heath wetland on outdoor bog	Wet heath wetland on outdoor bog
Dry heath wetland on natural land	Wet heath wetland on high bog (F10B and Sphagnum habitats)
Decomposed lake	Wet heath wetland on high bog (Sphagnum habitats)
Open, short high bog (F111) and Sphagnum habitats	Wet sedge wetland on outdoor bog
Open, short high bog (F111B)	Wet sedge wetland on outdoor bog
Open, short high bog (F12) and Sphagnum habitats	Wet sedge wetland on outdoor bog
Open, short high bog (Sphagnum habitats)	Wet sedge wetland on outdoor bog



Future Project Area Habitats based on Fossitt National Habitat Classification: Wooddown



Fossitt, C

Active Flood Bag on outdoor	Open, short high bog (impounding habitat)
Stands/woodland on outdoor & natural soil	Reed and large sedge swamps
Cluttered bog	Rich fen with scattered sedge
Cluttered bog (dominated by <i>Sphagnum</i> spp.)	Wet sedge woodland (small wood) pool habitats
Cluttered bog with scattered trees	Wet sedge woodland on outdoor bog
Dry heath woodland on outdoor bog	Wet heath woodland on outdoor bog
Dry heath woodland on natural soil	Wet heath woodland on high bog (F11C) and (impounding habitats)
Arthropod-rich heath	Wet heath woodland on high bog (F11C) and (impounding habitats)
Open, scattered heath (F11B) and impounding habitat	Wet sedge woodland on outdoor bog
Open, short high bog (F11B)	Wet sedge-woodland woodland
Open, short high bog (F11B) and impounding habitat	Wet sedge-woodland woodland
Open, short high bog (impounding habitats)	Wet sedge woodland (by water on outdoor bog)

